

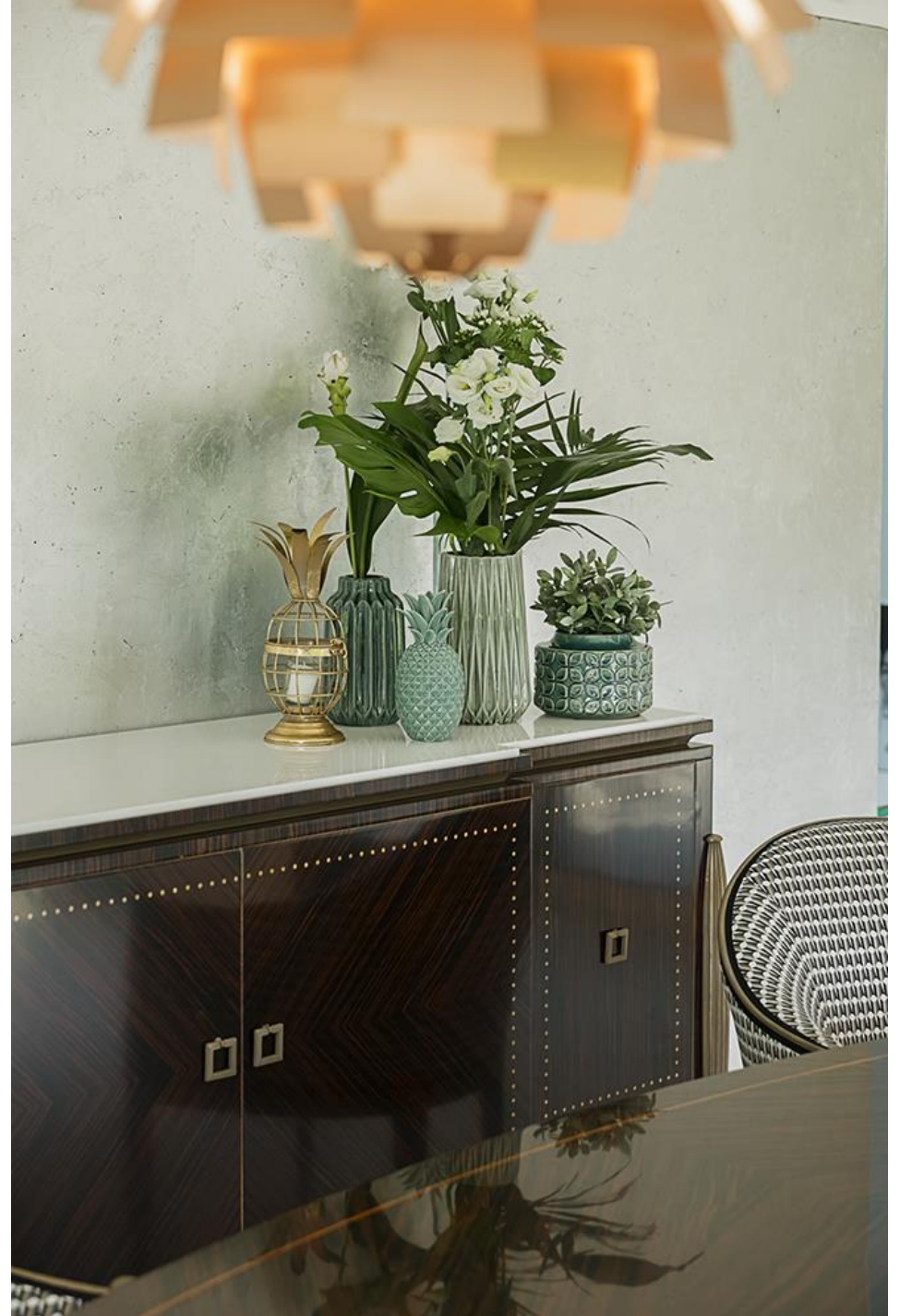


SALDA

1870

A NEW ELEGANCE

*A supreme example of
cabinet-making in the
Modern style.*

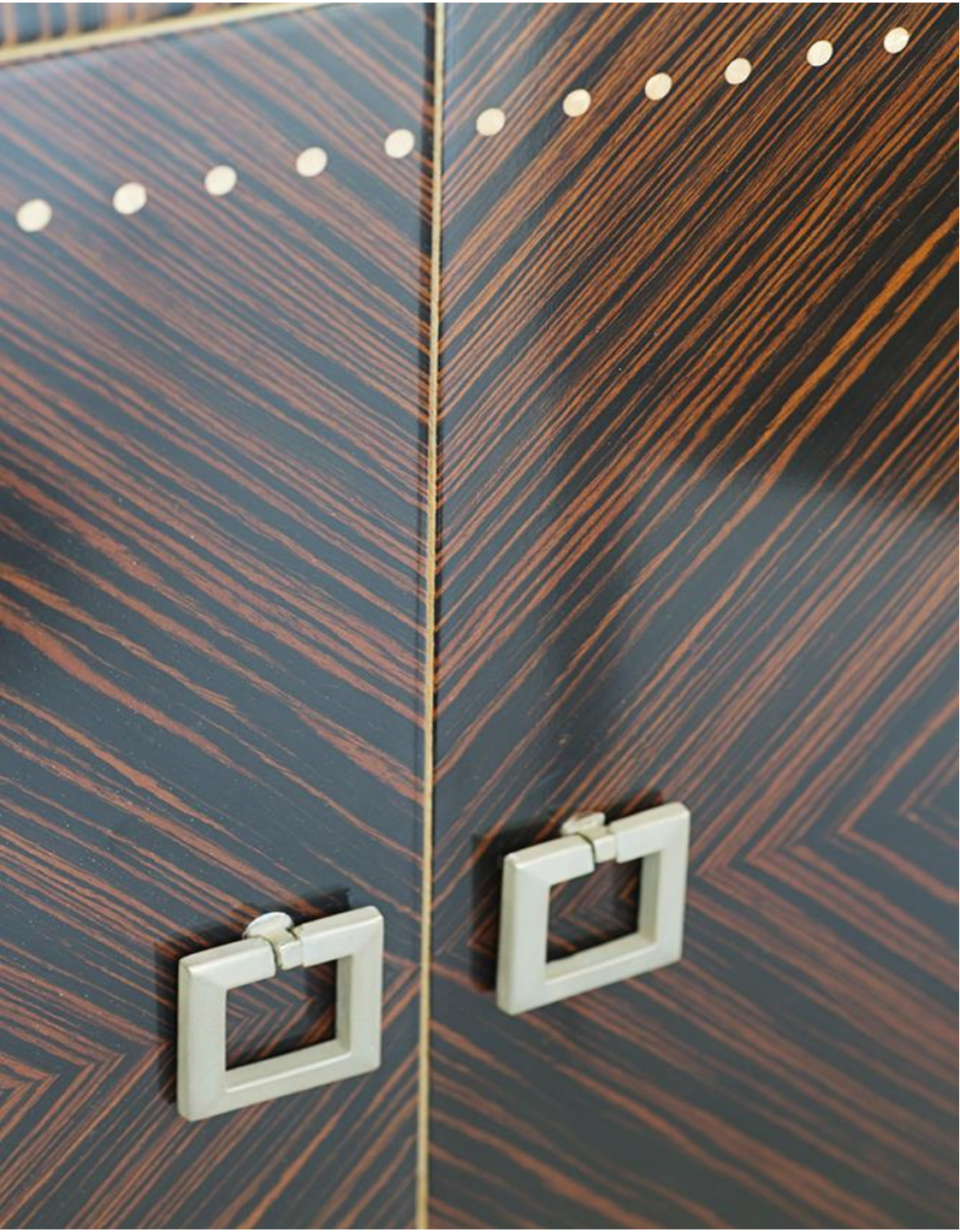


Art. 8677 – Sideboard



RARE AND PRECIOUS MATERIALS





MAKASSAR: SYMBOL OF MODERN ELEGANCE

The spare lines of the 1920s and 30s are rendered luxurious by the elegance and rarity of Makassar Ebony, one of the woods most frequently used in the gay yet sophisticated drawing-rooms of the haute bourgeoisie around the end of the First World War as a symbol of rediscovered affluence and modern elegance.

A piece of unrivalled design and craftsmanship, with marble top, bronze handles and inlays in mother-of-pearl, the frame and doors in solid wood, the costly makassar hand-crafted by Italy's most skilful veneer artists.

ONLY NOBLE WOODS OF PRIME QUALITY



Maple for the frame and
insides

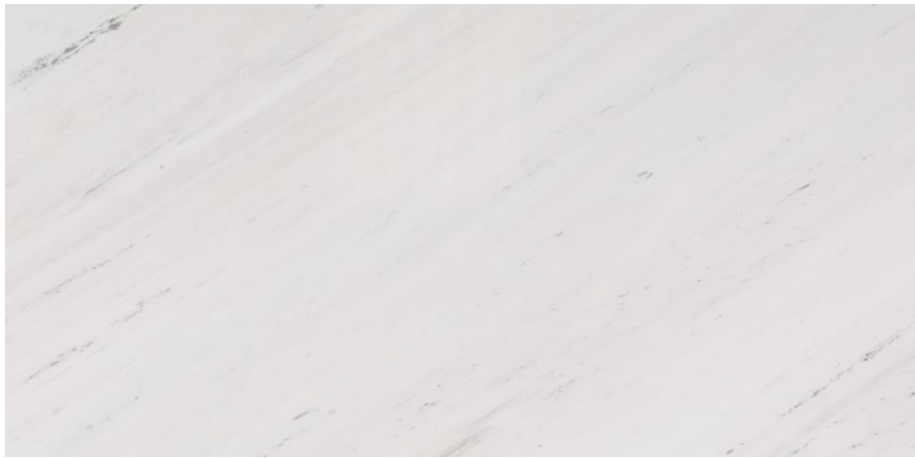


Makassar ebony for the
veneer



Beech for the legs

A MIX OF PRECIOUS MATERIALS



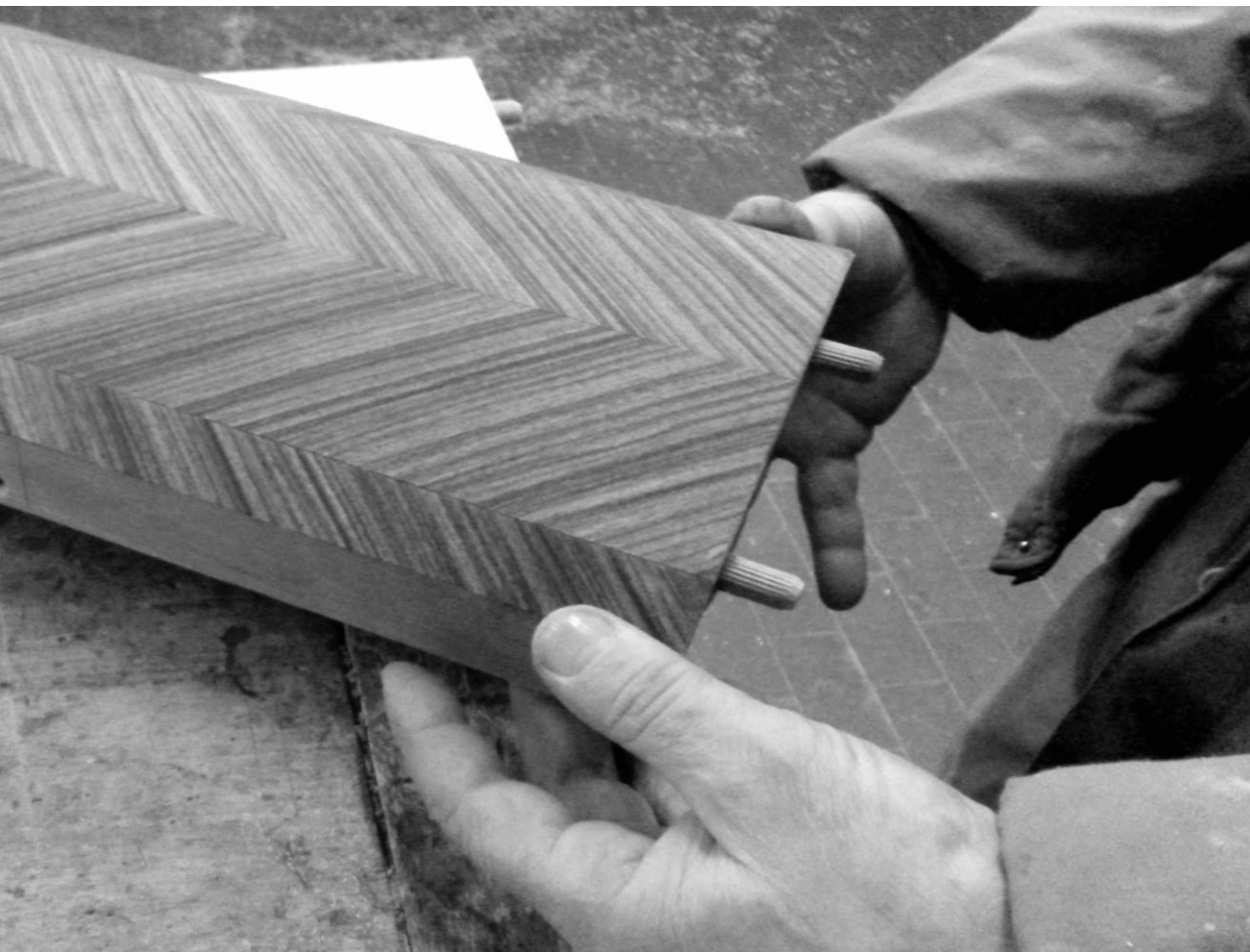
European marble for the top



Costly mother-of-pearl for the
decoration of the doors

PRIZED CRAFTSMANSHIP





MASTERY OF MATERIALS AND ATTENTION TO DETAIL

Hand-made throughout, this sideboard is one Salda's models calling for the greatest technical precision and manual dexterity. It takes no less than a month's work to make it, and the skills of 7 different craftsmen: **cabinetmaker, inlayer, turner, shaper, wood-carver, polisher and marble-worker** follow one after another bringing their skills and dedication to the various stages of manufacture until the piece finally takes shape.



THE MARQUETRY

Behind the decoration of this piece, apparently so simple and linear, lies all the manual dexterity of Brianza's craftsmen.

Slices of makassar-wood with different grain patterns are combined and fitted together by hand to create vertical streaking on the side doors and edges and a herring-bone motif on the central doors, inlaid with dots of purest mother-of-pearl.

All highly skilled craft-work demanding great precision and using the various colours of the wood to best advantage in the creation of symmetrically lustrous geometrical designs.

THE INSIDE

Just as elegant as the outside, this sideboard's interior of maple wood shows a wealth of refined detail.

On the right-hand side there is a small set of drawers in solid maple with black and bronze profiles, metallic-finish knobs and drawers on thin runners supporting dainty drawer-fronts.

On the left-hand side there is a thin shelf in maple with an ebony stripe in accordance with early 20th century taste.





The four doors repeat the geometrical design suggested by the outside with vertical grain in the solid maple of the side doors and oblique grain in the centre ones. All the doors have channels carved for the invisible hinges and elegant dark edging in strips of ebony.



THE LEGS

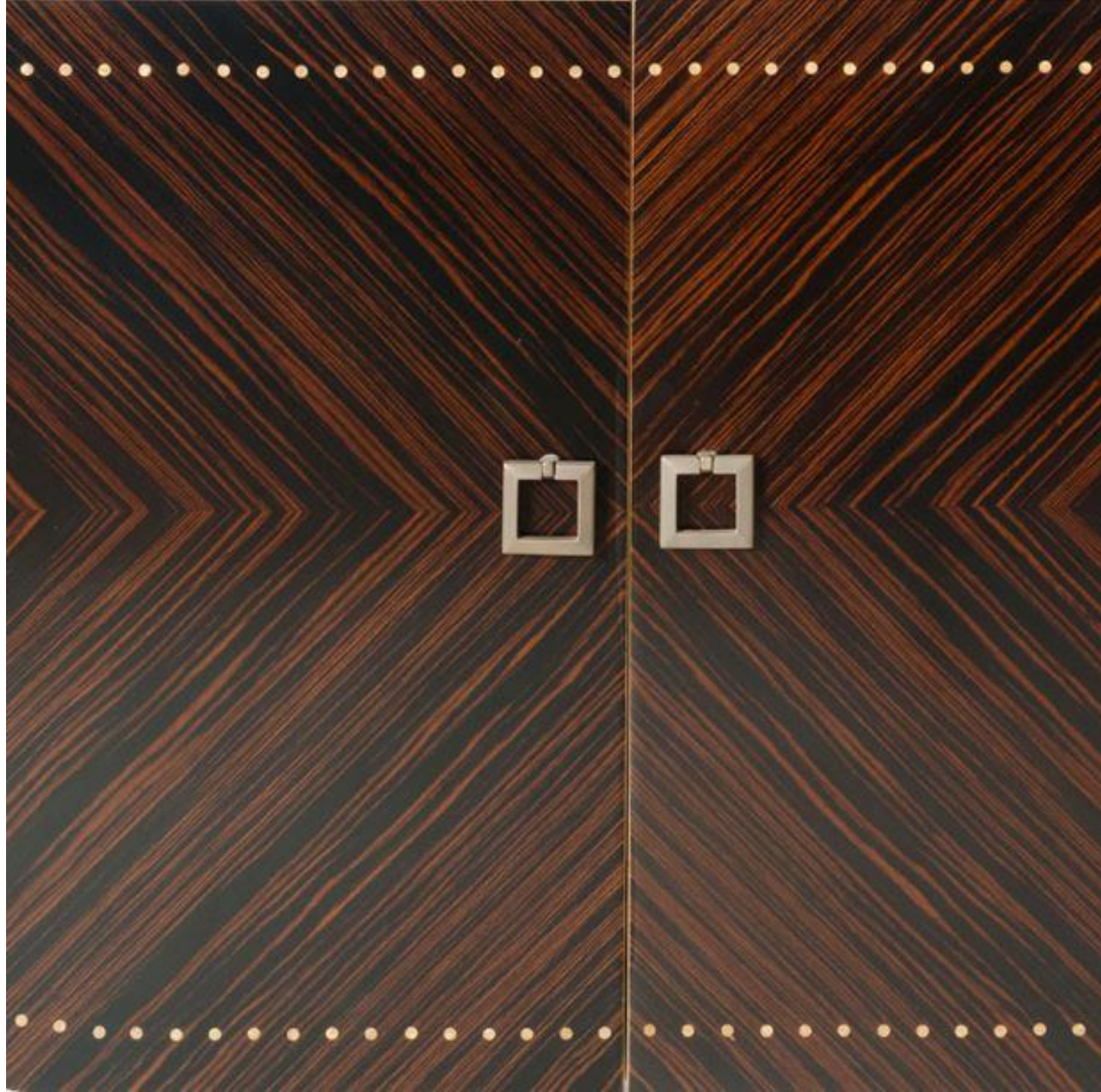
The sideboard's legs are a detail that may appear simple but is in fact extremely difficult.

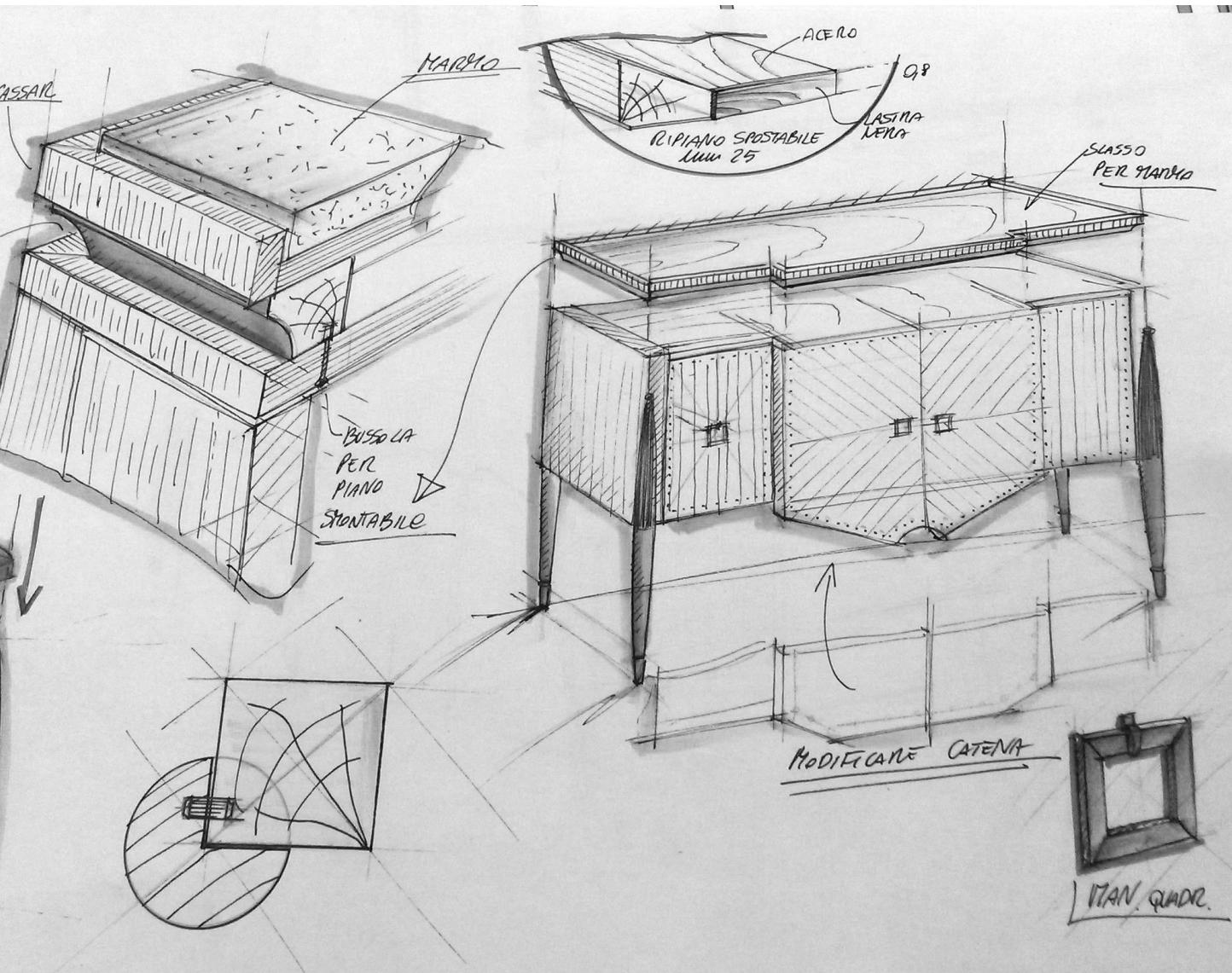
Their original and characteristic cigar shape demands the skills of a number of different craftsmen: the turner, who takes the unshaped billet and gives it the basic cylindrical shape, the shaper who chisels out the grooves, and the wood-carver who smooths and hand-finishes the shapes left by chisel and router.

The waxed metallic finish is achieved by applying metal microparticles many times over, sanding in between with progressively finer emery paper.



EXCLUSIVE AND SOPHISTICATED STYLE





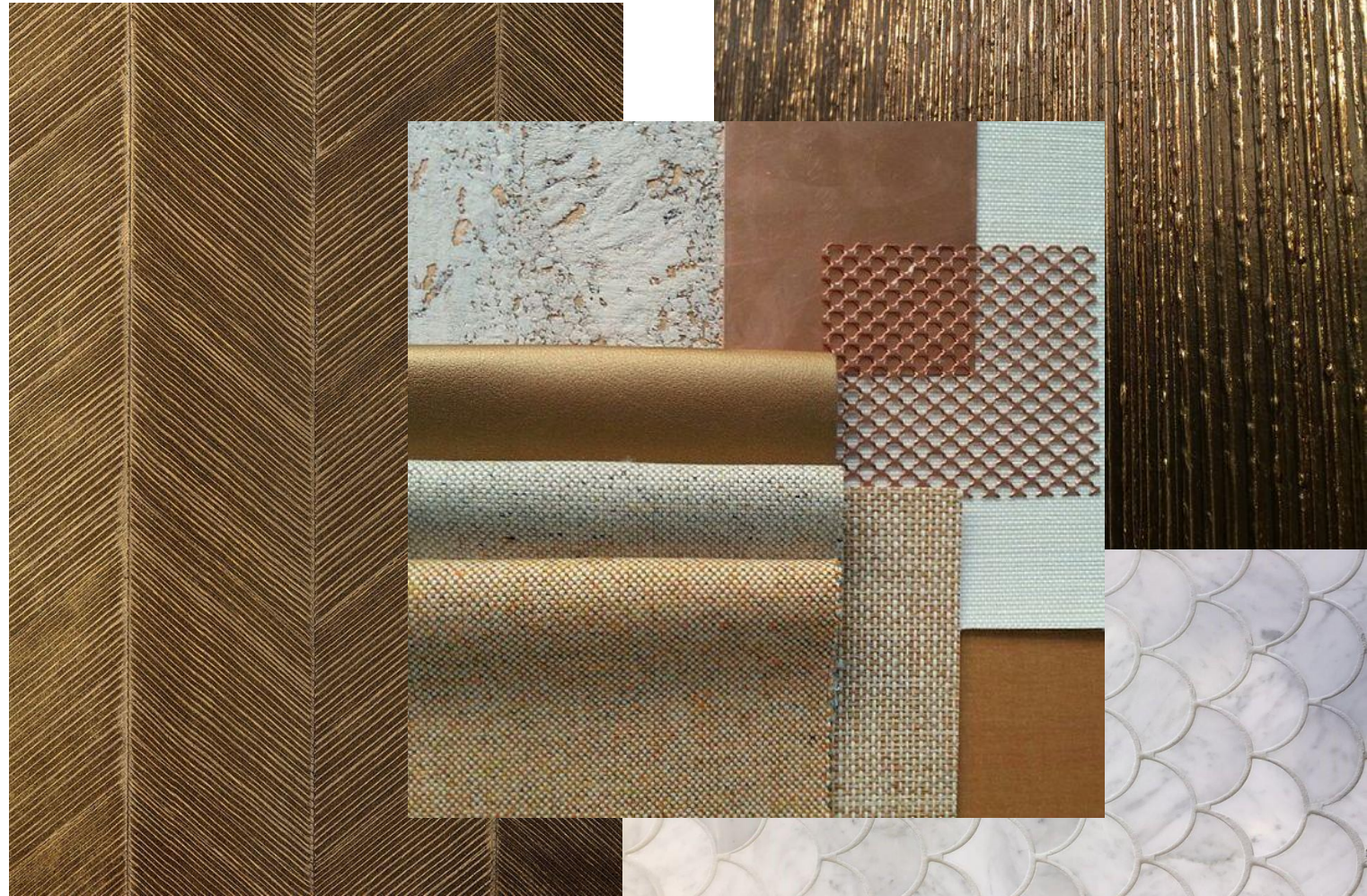
AN ICONIC MODEL

This piece is a redesigned version of a model originally produced by Salda in the early 1920s when following the end of the First World War it stopped making wings and propellers for warplanes and went back to furniture production.

It is an iconic model which well exemplifies Salda's post-war determination to pioneer new shapes that would test the limits of its technical cabinet-making.

The model is a reflection of its times, and in particular of a society returning to life, longing for opulence and concerned with modernity.

A side view of a dark wood cabinet with a zebra wood pattern, brass studs, and square pulls. It has a white top and a tapered leg.



TECHNICAL SHEET

Art. 8678

Sideboard with 4 doors, drawers in the right door, internal shelves in the other doors. Marble top cm.2.

SIZE: CM. 214 X 65 X 92

AS SHOWN

WOOD: ebony makassar and maple inside.

FINISHING: ebony makassar polished + feet lacquer
col.bronze metallic finishing

MARBLE: Bianco Sivec cm.2







SALDA

1870

Salda arredamenti s.r.l.

Via Einaudi, 31 - 20821 Meda (MB) - ITALIA
T.+39.0362.341229 - F.+39.0362.342187
info@saldaarredamenti.com - www.saldaarredamenti.it



saldaarredamenti



Salda1870



@saldaarredamenti